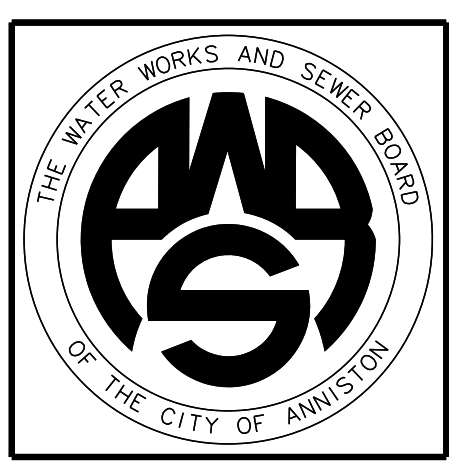


WATER WORKS & SEWER BOARD
CITY OF ANNISTON
CHOCOLOCCO WWTP
IMPROVEMENTS
ANNISTON, ALABAMA



PROJECT NO.	98062	
DESIGNED	PEB	
DRAWN	MDS	
CHECKED	RUH	
APPROVED		
DATE	JULY, 1999	
REVISIONS		
NO.	DATE	DESCRIPTION
1	NOV. 2006	RECORD DRAWING

RECORD DRAWING

SHEET TITLE
HEADWORKS BUILDING
FLOOR PLAN &
WALL SECTIONS

SHEET NO.
A3.01

SEQUENCE 44 OF 84

TYPICAL BUILDING CONSTRUCTION NOTES:
(REFER TO WALL SECTIONS 04 & 05 THIS SHEET)

TYPICAL ROOF CONSTRUCTION:

Single Ply Membrane Roof Over
Tapered Rigid Insulation
w/ 1/4" min. Slope per ft.
2" MIN. Thickness on
Precast Concrete
Double Tee Units - See Structural
for Size

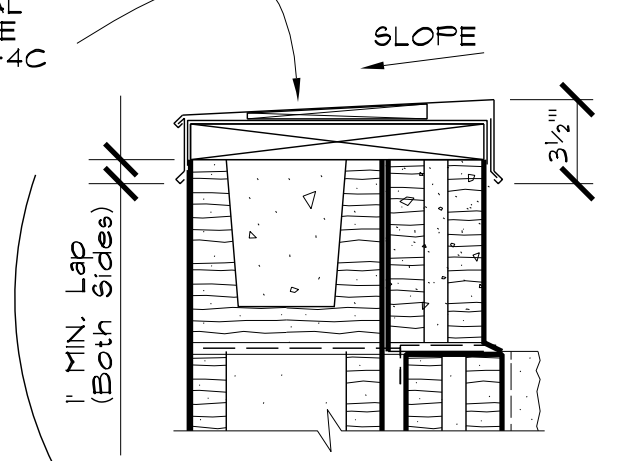
TYPICAL EXTERIOR WALL CONSTRUCTION:

Split-Rib Concrete
Masonry Units w/ Air Space
on 12" CMU w/ Galvanized
Reinforcement 16" OC Vert and
Adjustable Anchors @ 16" OC
Horizontally

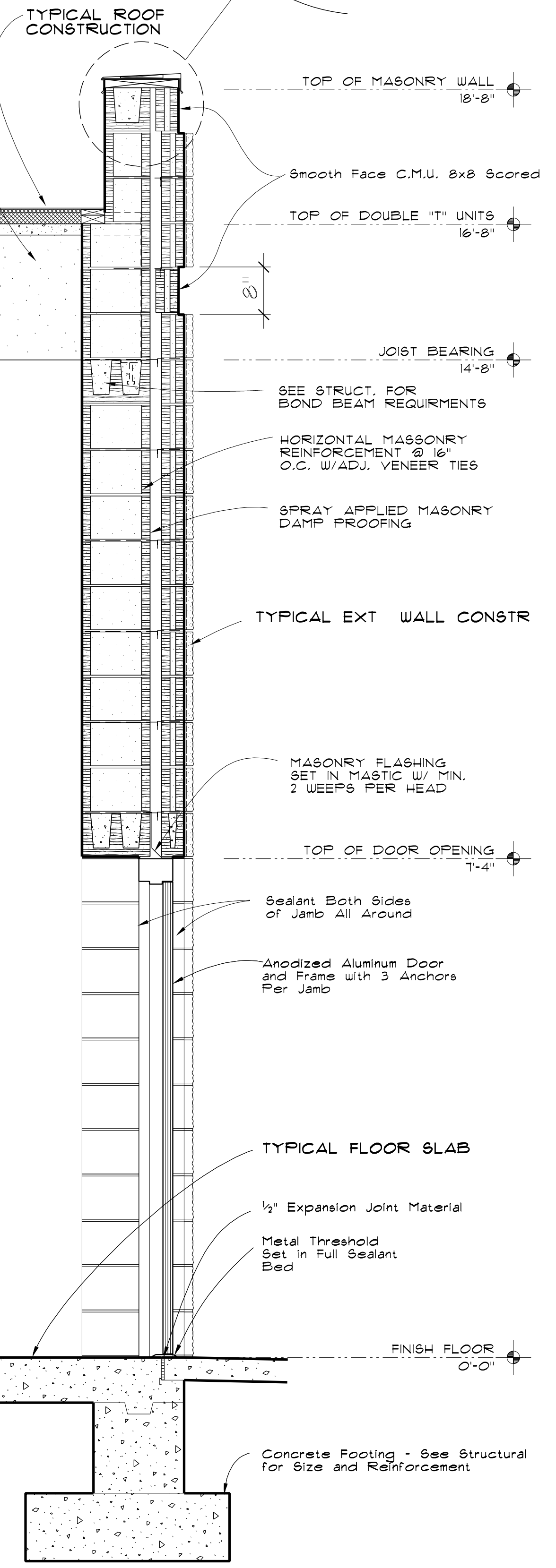
TYPICAL FLOOR SLAB CONSTRUCTION:

Concrete Slab - See Structural
for Size and Reinforcement -
over 6 Mil Vinyl Vapor Barrier
on 4" Crushed Stone on
Compacted Subgrade.

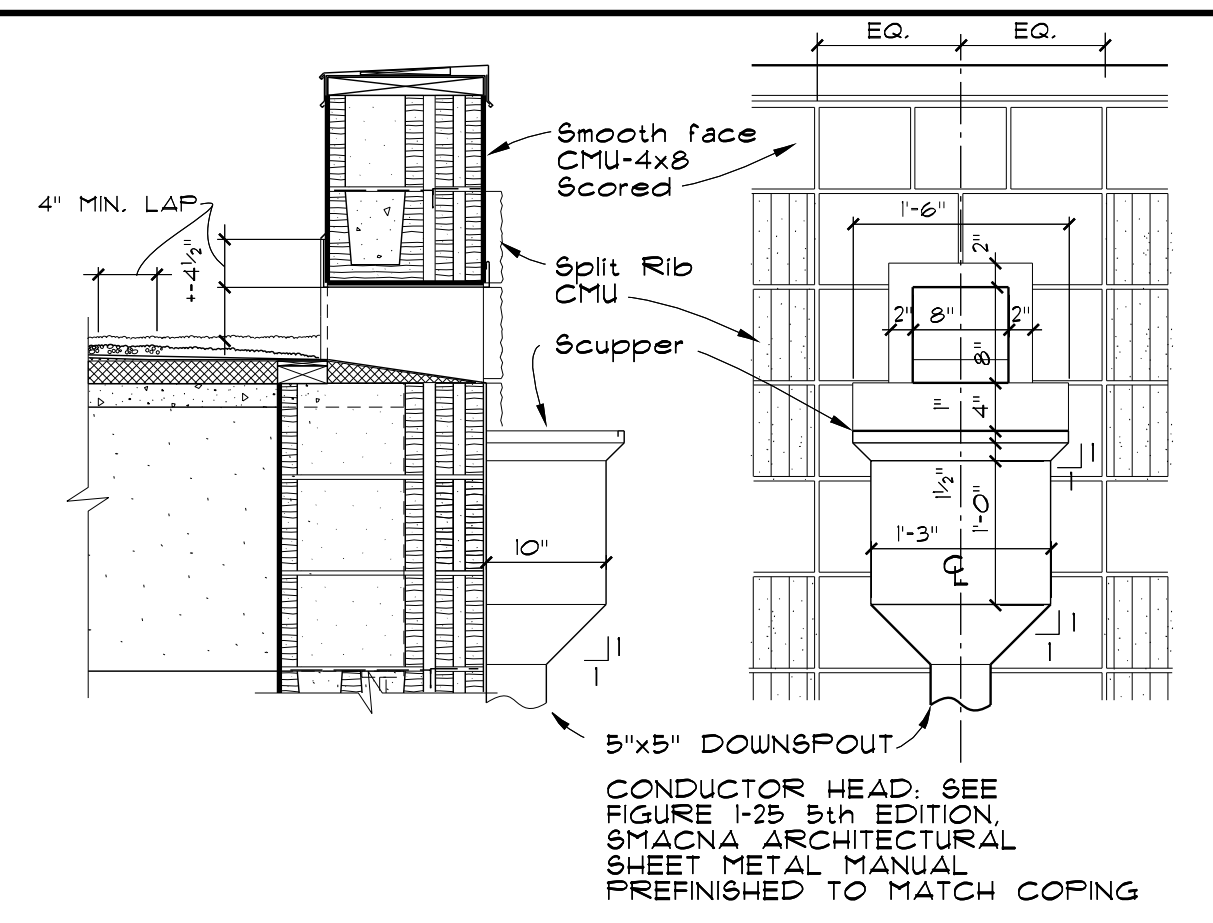
PRE-FINISHED
22 GA MET COPING.
PER SMACNA
ARCHITECTURAL
SHEET METAL
MANUAL, SEE
FIG. 3-1 & 3-4C



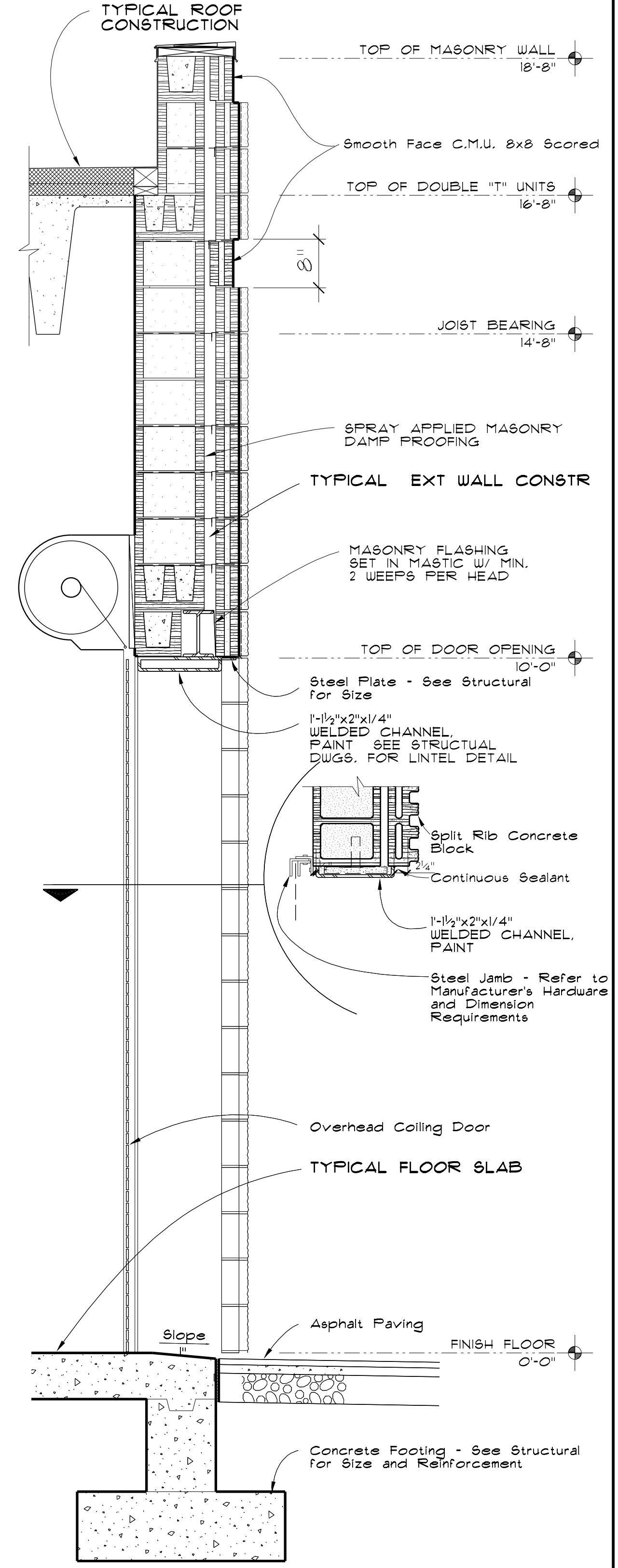
PRE-CAST DOUBLE
"T" SEE STRUCT. DWGS



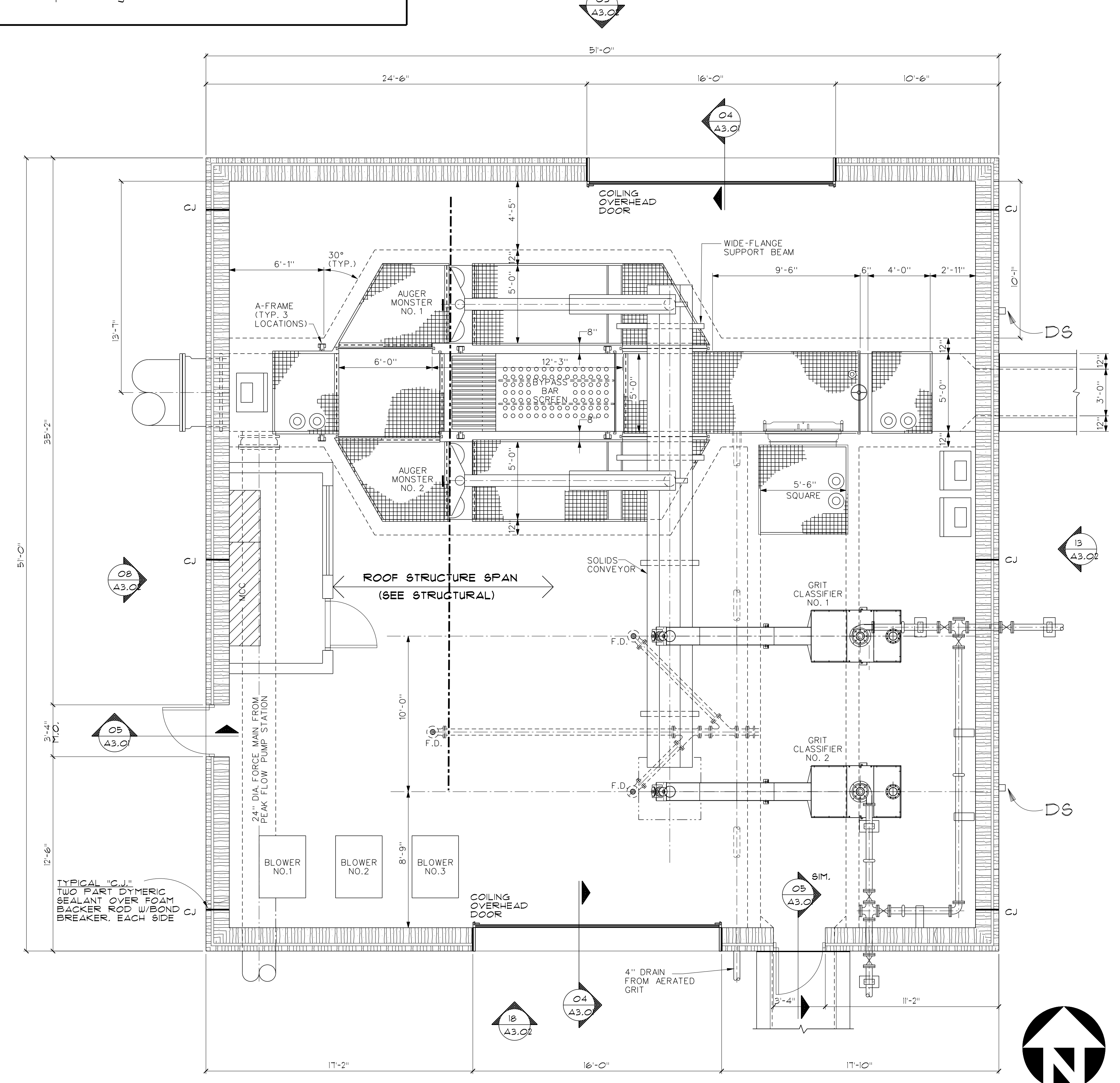
05 WALL SECTION



19 SCUPPER



04 WALL SECTION



03 FLOOR PLAN

8/14/2013 9:55:29 AM P:\projects\anniston\eng\anniston\98062-CV\records\dwg\A3.01.DWG